

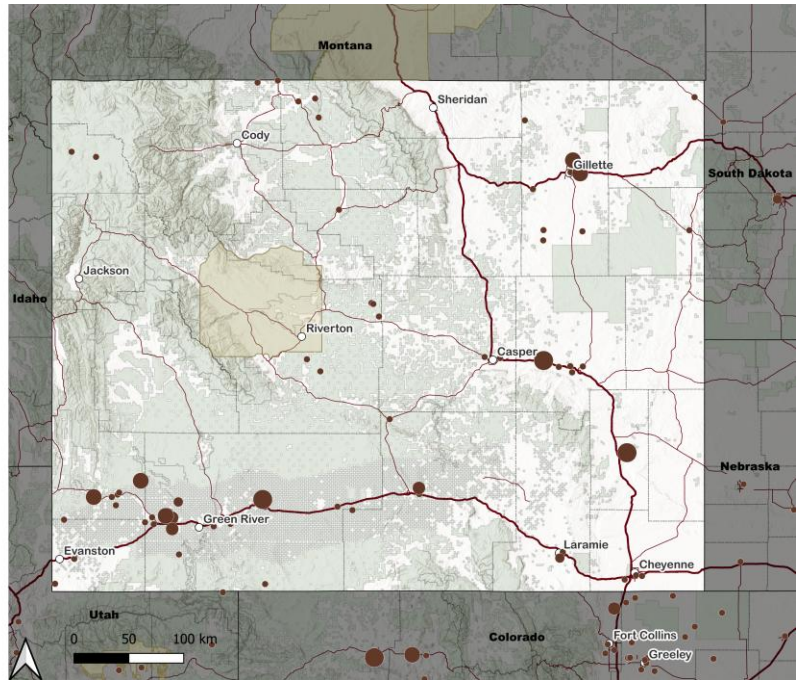


CAPTURE FOR CCUS IN WYOMING

CO₂ EMISSIONS

- Large CO₂ emitters are distributed throughout Wyoming.
- The largest CO₂ emitters by volume are coal plants, both as a sector and as individual emitters.
- Many of the largest emitters are located near major transportation routes.
- The co-location of large and smaller emitters in the southwestern part of the state is the best opportunity for a storage hub that supports infrastructure from multiple emitters and a small pipeline footprint.

- Boundaries**
- Major Cities
 - Reservations
 - Federal Land
 - Counties
- Transportation**
- Major Roads
- CO₂ Emissions (MtCO₂/yr)**
- 0.00 - 0.50
 - 0.50 - 0.85
 - 0.85 - 1.50
 - 1.50 - 3.00
 - 3.00+



EMISSIONS BY SECTOR*

Emissions Facility type	Facility Count	% of Total Facility Count	Emissions (MtCO ₂ /yr)	% of Total Emissions
Oil & Gas	22	30.14%	4.5824	9.93%
Power Plants - Coal	11	15.07%	32.4764	70.35%
Mining	10	13.70%	5.2902	11.46%
Power Plants - Gas	7	9.59%	0.1983	0.43%
Refineries	4	5.48%	1.3835	3.00%
Natural Gas Processing	4	5.48%	0.151	0.33%
Lime & Gypsum	3	4.11%	0.3935	0.85%
Power Plants - Other Fossil	3	4.11%	0.1621	0.35%
Food & Ag	2	2.74%	0.0771	0.17%
Chemicals - Other	2	2.74%	0.2558	0.55%
Chemicals	1	1.37%	0.4775	1.03%
Cement	1	1.37%	0.5324	1.15%
Facilities	1	1.37%	0.0223	0.05%
Waste - Landfill	1	1.37%	0	0.00%
Power Plants - Other	1	1.37%	0.1646	0.36%
Total	73	100.00%	46.1672	100.00%

* Data is from 2024, and derived from GHGRP, eGRID, EIA, and RFA.

45Q Tax Credits [\(LINK\)](#)

- Tax credits are available for capturing CO₂ from certain facilities, including:
 - Direct Air Capture facilities (must capture 1000 metric tons/yr)
 - Electric generating facilities (must capture 18,750 metric tons/yr)
 - Other facilities (must capture 12,500 metric tons/yr)
- The captured CO₂ must be:
 - Stored in secure geologic storage, including deep saline formations, oil and gas formations, and unminable coal seams, or
 - Used in utilization of carbon oxides.

KEY TAKEAWAYS

- ✓ Wyoming's largest CO₂ emitters are coal plants.
- ✓ Most emitters are concentrated in the SW.
- ✓ The greatest opportunity for a shared transportation network is in SW Wyoming.